

# Hughes Industrial Tank Shower Chiller

## Suitable for Non Flameproof Areas

### STANDARD FEATURES

- AISI 316 stainless steel non-ferrous plate evaporator
- AISI 304 stainless steel internal water circulation pump
- 100% stainless steel & non-ferrous internal water circuit
- Heavy duty IP65 weatherproof cabinet
- Water outlet temperatures from +15°C to +30°C
- Suitable for ambient operation 0°C to +50°C
- Digital electronic temperature control system
- 3.5 kW of cooling capacity {32°C ambient}
- Corrosion resistant epoxy condenser coating
- Internal flow switch & low level tank switch cut-out
- Serviceable air filters for protection against sand/dust environment - Replacement HEC55060



PERFORMANCE	Cooling duty (kW)	Water Inlet (°C)	Water Outlet (°C)	Ambient (°C)
Standard Conditions	3.5	+27.0	+22.0	+32.0
Design Conditions	2.2	+27.0	+22.0	+50.0

### Refrigeration & condensation

Refrigerant	R404a, single circuit
Compressors	Single scroll, 1.6 kW
Condensation	Air-cooled axial fan
Fans	1 x 0.15 kW

### Dimensions (mm) & weights (kg)

Length 625, depth 435, height 1,050  
Operational weight 95, transport 90

### Electrical requirements

Absorbed power	2.5 kW (12.2 A) max.
Standard power	230V / 50 – 60 Hz / 1ph

### Hydraulic details

Standard pump	0.55 kW / AISI 304
Flow range	2 – 25 litres / minute
Pressure range	4.2 – 0.5 BAR
Evaporator	AISI 316 inox plate
Connections	0.5"-inlet/outlet

### Sound

55 dB (A) maximum recorded in a free spherical field 3 metres from condenser coil

### Standard Voltage Options

Operational Voltages available: 230 V / 50 – 60 Hz single phase, 110 V / 50 – 60 Hz single phase, 380 V – 440V / 50 Hz – 60 Hz three phase and 480 V / 60 Hz three phase. Additional serviceable air condenser filters available for protection against sand/dust environments.

for the latest updates go to

[www.hughes-safety-showers.co.uk](http://www.hughes-safety-showers.co.uk)

For Non Flameproof Areas

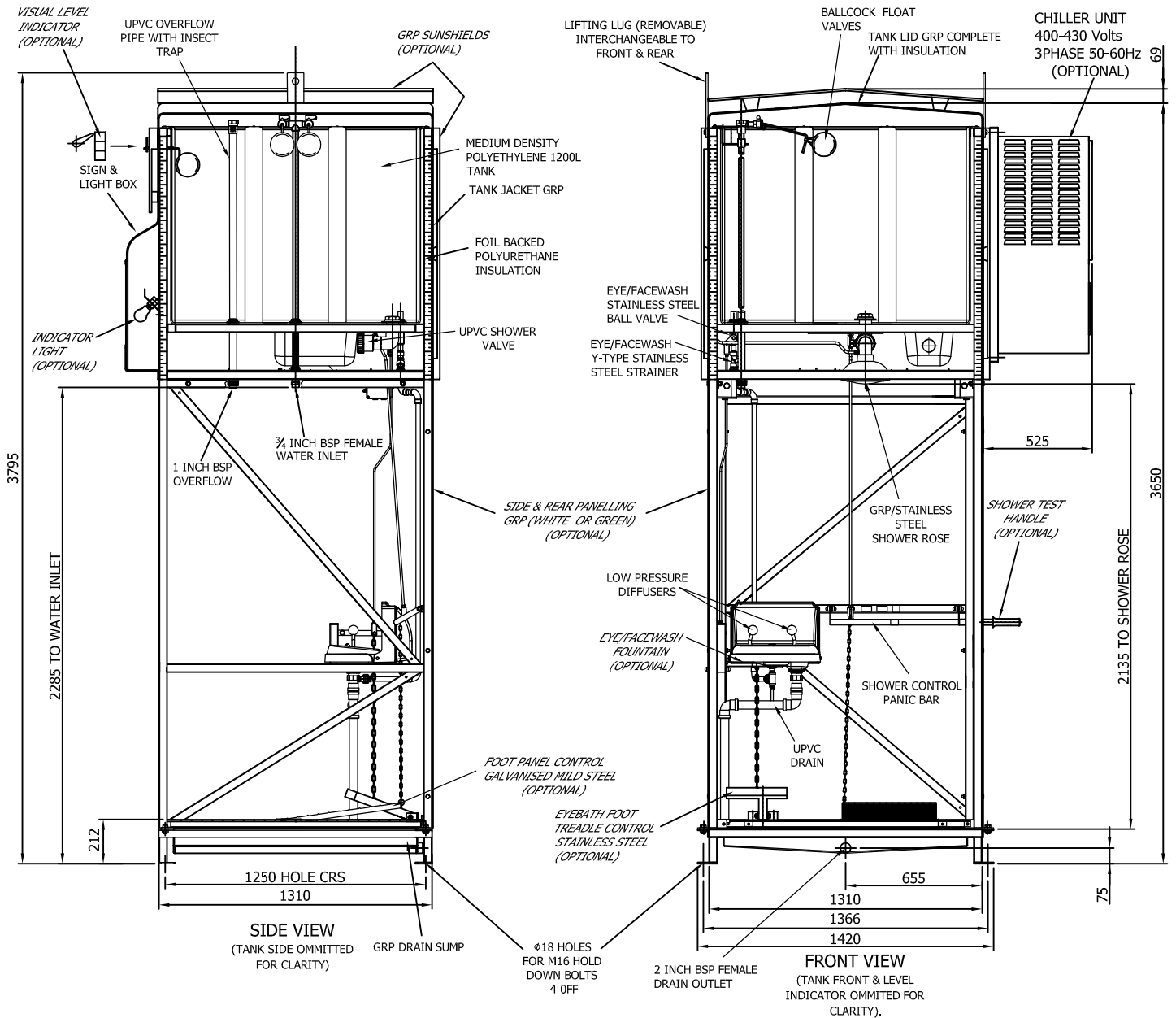
TANK SHOWER CHILLER

**HUGHES**

 HUGHES-SAFETY-SHOWERS.CO.UK

Hughes Safety Showers Ltd  
Whitefield Road, Bredbury  
Stockport, SK6 2SS, UK  
Tel: +44 (0)161 430 6618  
Fax: +44 (0)161 430 7928  
Email: [info@hughes-safety-showers.co.uk](mailto:info@hughes-safety-showers.co.uk)

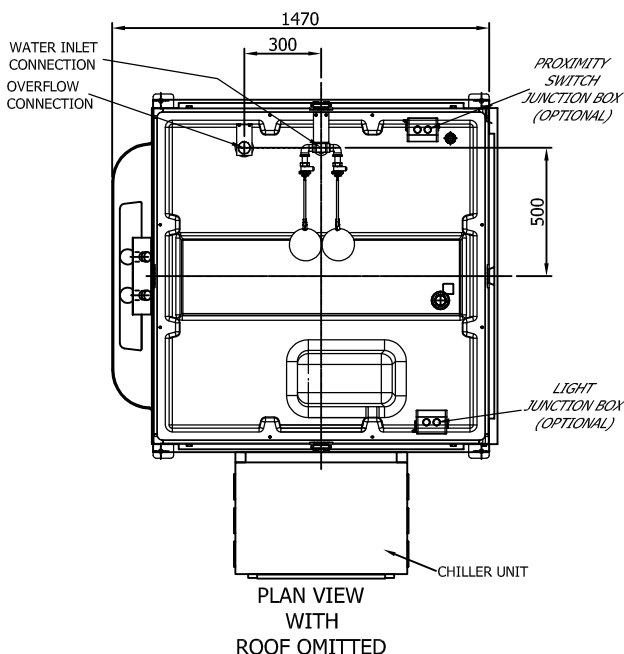
DIMENSIONS IN MILLIMETRES PROJECTION



**NOTES:**

1200 LITRE CAPACITY TANK IN MEDIUM DENSITY POLYETHYLENE. SUPPORT FRAME AND LEGS MANUFACTURED FROM GALVANISED HOLLOW SECTION (K) OR STAINLESS STEEL HOLLOW SECTION (KS). SHOWER LEGS ARE REMOVABLE TO FACILITATE TRANSPORT. TANK LID, TANK JACKET & SIDE PANNELLING AVAILABLE IN EITHER WHITE OR GREEN GRP. ELECTRIC SUPPLY (IF REQUIRED FOR OPTIONALS) TO BE SINGLE PHASE, 50 OR 60 HZ 240 OR 110 VOLTS.

**EMERGENCY SAFETY SHOWER WITH INSULATED STORAGE TANK & EYE/FACEWASH FOUNTAIN, SUNSHIELDS, CHILLER UNIT & DRAIN SUMP.**



**HUGHES SAFETY SHOWERS**

Whitefield Rd, Bredbury, Stockport, Cheshire, SK6 2SS, England.  
Telephone (0)161 430 6618, Fax (0)161 430 7928.  
Email : sales@hughes-safety-showers.co.uk

DRAWN	PBG	MODEL	
CHECKED	PBG		EXP-J-14K/1200
APPROVED	AL		EXP-J-14KS/1200
DATE	17/09/10	DRAWING NO:	EXP22017 REV. A

# EXP-J-14K/1200

(UK MODEL STD-J-14K/1200)

Emergency Tank Shower incorporating a 1200 litre tank to deliver a guaranteed flow of tepid water for up to 15 minutes even when the mains supply has been disrupted.



## General Use Tank Showers

Hughes Safety Showers Manufacture a range of heavy duty Emergency Tank Showers, for use when tepid water is required, or a constant supply of water cannot be guaranteed.

These units are essential where there is a problem with insufficient water pressure or inadequate flow rate. This improved range incorporates models to suit a wide range of situations.

The indoor or tropical versions are insulated but without the heating to ensure a steady temperature is maintained whereas the outdoor types are heated and preinsulated to prevent freezing during conditions of frost.

Tank Showers are available in three sizes:

The 350 litre model supplies a guaranteed flow of tepid water for several minutes.

With the mains supply permanently connected the 750 litre model will deliver tepid water for the 15 minutes recommended by the ANSI standard.

The 1200 litre model will meet the standard even without an external supply connected.

for the latest updates go to

[www.hughes-safety-showers.co.uk](http://www.hughes-safety-showers.co.uk)



Whitefield Road  
Bredbury, Stockport  
Cheshire, SK6 2SS  
United Kingdom  
Tel: +44 (0)161 430 6618  
Fax: +44 (0)161 430 7928  
Email: [info@hughes-safety-showers.co.uk](mailto:info@hughes-safety-showers.co.uk)

# EXP-J-14K/1200

(UK MODEL STD-J-14K/1200)

The water tank is manufactured in medium density polyethylene and insulated with foil backed polyurethane insulation. The insulation is enclosed within a tank surround in either white (or green) Glass Reinforced Plastic (GRP). The tank casing is distinctively marked with green and white safety stripes and incorporates a combined Safety Sign and optional Light Box.

The frame is manufactured from either Galvanised Steel (EXP-J-14K/1200) or Stainless Steel (EXP-J-14KS/1200) ensuring a robust and long lasting structure which is virtually maintenance free.

The frame is mounted on four galvanised steel or stainless steel legs, each leg having a fixing plate drilled 17mm for four M12 holding down bolts.

The shower is normally activated when the Panic Bar is depressed. Alternatively it can be activated when the casualty stands on the optional Foot Panel. An extension of the Panic Bar can be fitted to allow shower testing to be easily carried out without the operator getting wet.

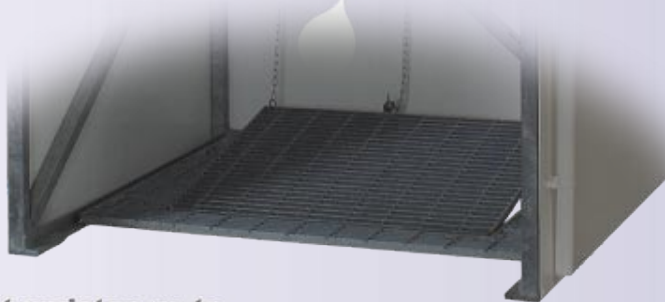
To prevent overspray the frame can be fitted on three sides with enclosing Panelling made from white (or green) heavy duty GRP. This same panelling acts as a barrier, protecting both the water spray and the user from the elements.

The Light Box incorporates pictogram 'Shower' signs to EC standard 92/58/EEC. The light (optional) illuminates the signs for greater visibility on dull days and at night. Diffusers also shine downwards to ensure the operating mechanism and shower areas are well lit at all times.

An optional externally mounted Facewash Fountain is available which incorporates an integral lid connected to the water valve to automatically operate the Facewash when opened. The lid ensures that the bowl remains clean and free from contamination when not in use. The lid is fitted with a mirror with first aid instructions. Alternatively, a hand-held Eyebath can be fitted. Both the externally mounted Facewash Fountain or the hand-held Eyebath can be fed either from the tank or from the mains. A tank feed ensures a constant flow and has the advantage of reducing the problems caused by overheating of the supply pipe. A mains supply has the advantage of using fresh potable water and can be used as a test to ensure there is a sufficient water flow into the tank.

A range of further additional options are available (see Optional Fittings section) to enhance the function and safety of the Tank Shower unit.

For delivery purposes on our export models (EXP) the tank can be removed and the support frame can be flat packed to reduce packing and freight costs.



for the latest updates go to

[www.hughes-safety-showers.co.uk](http://www.hughes-safety-showers.co.uk)

TECHNICAL DETAILS



Whitefield Road  
Bredbury, Stockport  
Cheshire, SK6 2SS  
United Kingdom  
Tel: +44 (0)161 430 6618  
Fax: +44 (0)161 430 7928  
Email: [info@hughes-safety-showers.co.uk](mailto:info@hughes-safety-showers.co.uk)

# EXP-J-14K/1200

CACNFF-DOC-ES-0212-09 REV 0100

(UK MODEL STD-J-14K/1200)

## EQUIPMENT DATA SHEET - EXP-J-14K/1200 & OPTIONS

INLET CONNECTION SIZE & TYPE	3/4" BSP Female
PIPING & VALVE MATERIALS	UPVC Piping & Valve for Shower
	UPVC Piping & Brass Valve for Eyebath
SHOWER OPERATION	Panic Bar or Foot Control (Optional Test Bar)
FACEWASH OPERATION	Lift Lid
SUPPLY PRESSURE	0.5 Bar (minimum) - 5 Bar (maximum)
FLOW AT OPERATING PRESSURE	Shower - 75 Litres/Min
	Eyebath - 10 Litres/Min
ELECTRICAL EQUIPMENT SUITABLE FOR USE IN AREAS CLASSIFIED AS	Non-Flameproof or Zone 1&2, Gas Groups IIa & IIB Temp Class T3
ELECTRICAL SUPPLY	240V, Single Phase, 50Hz (110V Optional)



## UNIT DIMENSIONS & PACKING SPECIFICATIONS (SINGLE UNIT)

UK SPECIFICATION	LENGTH (cm)	WIDTH (cm)	HEIGHT (cm)	GROSS (kg)
UNIT DIMENSIONS (UNPACKED) - NO OPTIONS	367	148	132	290
UNIT DIMENSIONS (UNPACKED) - STD OPTIONS	367	148	177	360
PACKED ON SKID & WRAPPED - NO OPTIONS	382	151	150	335
PACKED ON SKID & WRAPPED - STD OPTIONS	382	151	194	405
<b>EXPORT SPECIFICATION</b>				
The Tank Shower Legs can be removed and flat packed to reduce volume when shipping (EXP models). Although volume is similar to UK packing for a single unit, a great deal of space can be saved for 2 or more units when packed this way.				



## MATERIALS LIST FOR HUGHES EMERGENCY 1200 LITRE TANK SHOWER

SHOWER ROSE	1/2" BSP GRP/Stainless Steel Rose. Delivers 75 litres/minute
CONTROL VALVE	uPVC 1-1/2" BSP Ball Valve. Effast Type 22 to BS4346 Part 1. Tested to works cert DIN 50049-2-1
CONTROL VALVE TANK CONNECTION	uPVC tube fastened to tank with 1-1/2" BSP uPVC flanges to BS3505
WATER INLET	3/4" BSP coupled to uPVC tube
OVERFLOW	uPVC tube fastened to tank with 1" BSP uPVC flanges to BS3505
BALLCOCK VALVE & FLOAT	2 x 1/2" BSP Brass Ballcock Valve to BS1212/PE2 with 5" Float
VALVE LEVERS	Red Reinforced Nylon
SHOWER CONTROL BAR	Stainless Steel Grade 321 Schedule 5 Tubing, Plastic Coated Red
TANK CLADDING & LID	Heavy Duty GRP (Green or White)
INSULATION	Foil Backed Polyurethane
EYEBATH/FACEWASH TANK CONNECTION	uPVC tube fastened to tank with 1/2" BSP uPVC flanges to BS3505
EYEBATH/FACEWASH VALVE	3/4" to 1/2" Brass Hexagonal Full Flow Ball Valve with Stainless Steel Ball and PTFE Seats
EYEBATH/FACEWASH STRAINER	1/2" Brass "Y" Strainer with 100 mesh Monel Filter Basket
PULL RODS FOR VALVE OPERATION	Stainless Steel Grade 304 Round Bar
FACEWASH DIFFUSERS	2 off Red Nylon Spherical Diffusers
SWAN NECKS	2 off Stainless Steel 316 SCH 40
FLOW REGULATOR TEE	Black Nylon with Three Pronged Regulator
FACEWASH BOWL (COMPLETE)	White Injection Moulded GRP with Integral Safety Mirror
PANEL TYPE FOOT CONTROL	Mild Steel to BS4592 Galvanised to BS729
FOOT PANEL SUPPORT SPRINGS	Stainless Steel EN58A type 302
FOOT PANEL CHAIN	Mild Steel Galvanised to BS729
REAR & SIDE SCREENS	Heavy Duty GRP White (or Green)
WATER TANK	1200 Litre Capacity Medium Density Polyethylene
FACEWASH DRAIN	1 1/2" BSP to 1 1/4" White uPVC Tubing & Elbows
SHOWER FRAME & LEGS	Mild steel hollow section galvanised to BS729 and exposed metal over-painted with silver Hammerite enamel paint, or Stainless Steel type 304L with semi-polished finish
ALL FASTENERS	Stainless Steel A2

# TECHNICAL DATA

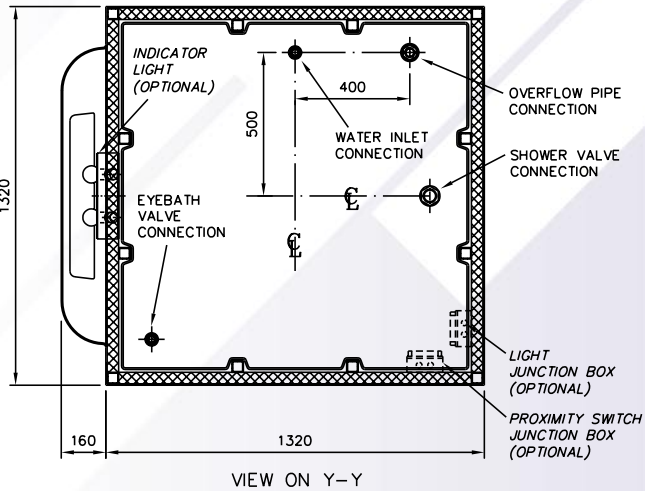
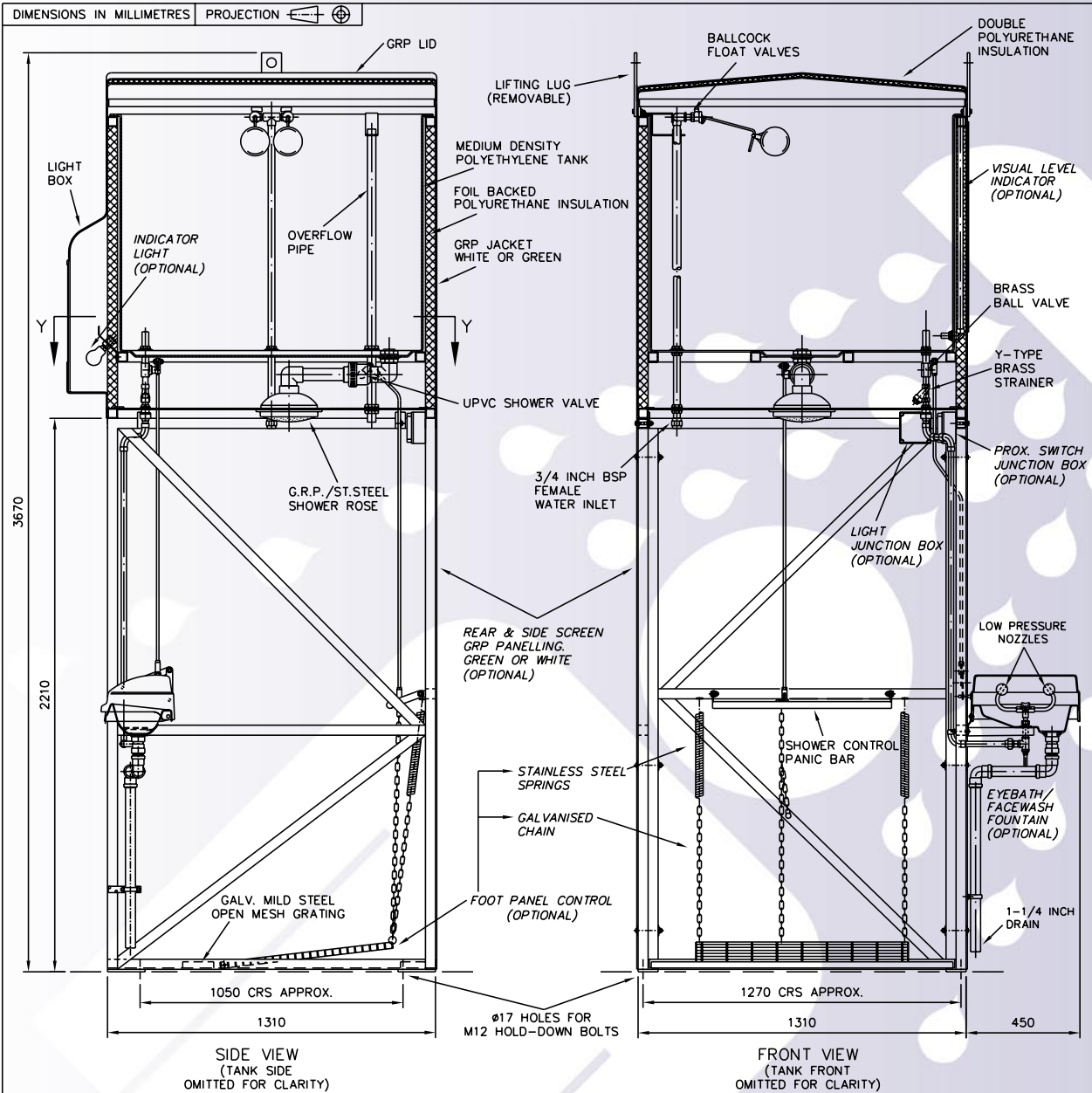
for the latest updates go to

[www.hughes-safety-showers.co.uk](http://www.hughes-safety-showers.co.uk)

**HUGHES**  
[www.hughes-safety-showers.co.uk](http://www.hughes-safety-showers.co.uk)  
 Whitefield Road  
 Bredbury, Stockport  
 Cheshire, SK6 2SS  
 United Kingdom  
 Tel: +44 (0)161 430 6618  
 Fax: +44 (0)161 430 7928  
 Email: [info@hughes-safety-showers.co.uk](mailto:info@hughes-safety-showers.co.uk)

# EXP-J-14K/1200

(UK MODEL STD-J-14K/1200)



**NOTES :-**

1200 LITRE CAPACITY TANK TO BE OF MEDIUM DENSITY POLYETHYLENE. ALL TUBING TO BE UPVC. SUPPORT FRAME AND LEGS MANUFACTURED FROM GALVANISED HOLLOW SECTION(K), OR STAINLESS STEEL HOLLOW SECTION(KS).

TANK LID, TANK JACKET, AND SIDE PANELLING AVAILABLE IN EITHER WHITE OR GREEN GRP. ELECTRIC SUPPLY (FOR OPTIONALS) TO BE SINGLE PHASE 50/60 Hz, 240 OR 110 VOLTS. PLEASE SPECIFY WHEN PLACING ORDER

**TRANSPORTABLE EMERGENCY SHOWER WITH INSULATED STORAGE TANK AND EYEBATH/FACEWASH FOUNTAIN.**

## HUGHES SAFETY SHOWERS

Whitefield Rd, Bredbury, Stockport, Cheshire, SK6 2SS, England.  
Telephone (0)161 430 6618, Fax (0)161 430 7928.  
Email : sales@hughes-safety-showers.co.uk

DRAWN	ASF	MODEL
CHECKED	CP	EXP-J-14K/1200
APPROVED	AL	EXP-J-14KS/1200
DATE	10/02/03	DRAWING NO: DG22008    REV. B

**G.A. DRAWING**

for the latest updates go to

[www.hughes-safety-showers.co.uk](http://www.hughes-safety-showers.co.uk)



Whitefield Road  
Bredbury, Stockport  
Cheshire, SK6 2SS  
United Kingdom  
Tel: +44 (0)161 430 6618  
Fax: +44 (0)161 430 7928  
Email: info@hughes-safety-showers.co.uk