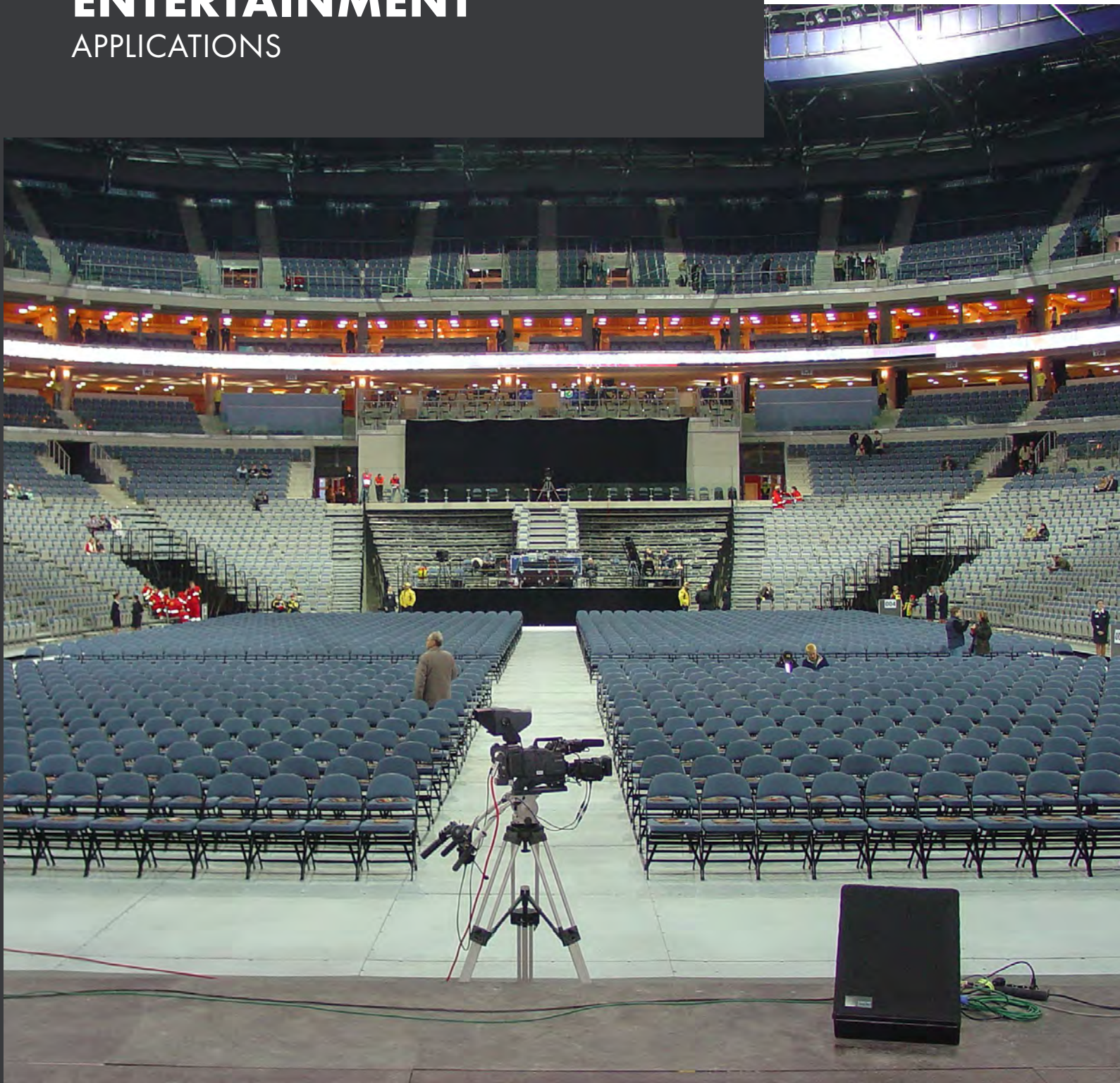




CHECKERS

Justrite Safety Group

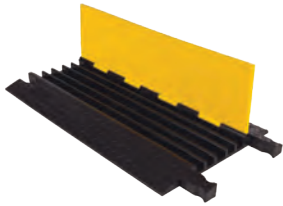
ENTERTAINMENT APPLICATIONS



ENTERTAINMENT APPLICATIONS

CABLE PROTECTION

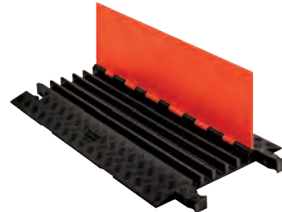
Checkers™ manufactures the most extensive line of high-performance cable protection products in the world. These durable systems protect valuable electrical cables, cords and hose lines from damage while providing a method of safe passage for pedestrian traffic, vehicles and heavy-duty equipment.



YELLOW JACKET® SERIES

Model # YJ5-125

- Introduced over 30 years ago, the “original” cable protector
- Dog Bone connectors to extend to any length
- Recommended for applications with heavy volume vehicle traffic
- ⚠️ **WARNING:** Below



GUARD DOG® SERIES

Model # GD5X125

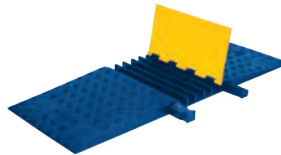
- Checkers’ most versatile option
- For pedestrian traffic and over-the-road vehicles
- Ideal for: Utility, Industrial, Entertainment
- ⚠️ **WARNING:** Below



FASTLANE® SERIES

Model # FL2X1.75

- Fast drop-over installation
- Compact, low-profile design
- 1- and 2-channel options
- ⚠️ **WARNING:** Below



YELLOW JACKET® SERIES ADA/DDA

Model # YJ5-125-ADA

- Protects cables and hoses up to 1.325-in. outside diameter
- ADA/DDA accessibility ramps built in
- Connects directly to a standard ramp
- 5-Channel Yellow Jacket® cable protector with Dog Bone connector
- ⚠️ **WARNING:** Below



FIREFLY® SERIES

Model # FF5X125

- High-visibility lid colors
- Battery-powered LED lights (red or blue) built in to side ramps
- Interconnects directly to a standard cable protector with a Dog Bone connector
- ⚠️ **WARNING:** Below



AMS ACCESSIBILITY RAMPS

Model # AMS KIT 1

- Sectioned into pieces for easy setup and transport
- Features bright yellow ramps for easy visibility
- Includes blue ADA side ramps to eliminate ramp drop off
- ⚠️ **WARNING:** Below



TRANSPORT CARTS

Model # CT4W-ST

- Easy way to transport and store up to 10 cable protectors
- Includes front wheel locks
- Durable black powder-coat paint finish
- Rugged, tubular steel frame

⚠️ **WARNING:** This product can expose you to chemicals including Carbon Black, Titanium Dioxide, Formaldehyde, and Benzyl Butyl Phthalate, which are known to the State of California to cause cancer and birth defects or other reproductive harm. For more information go to www.P65Warnings.ca.gov.

ENTERTAINMENT APPLICATIONS

PARKING SAFETY SOLUTIONS

Checkers™ traffic safety products are efficient, high-quality parking lot safety solutions. Designed for speed reduction, these solutions keep roads and parking lots safe for both motorists and pedestrians. Checkers™ speed bumps, speed humps, and car stops are long lasting, easy to install, and environmentally-friendly.



PARKING STOP

Model # 16101Y

- Helps protect the front of vehicles
- Prevents damage to structures
- Highly visible & extremely durable
- Ideal for indoor or outdoor residential parking
- ⚠️ **WARNING:** Below



SPEED HUMP

Model # 23500V

- Slows traffic to 10-15 mph
- Interlocking design expands to any road width
- Maintains continuous traffic flow
- Made from vulcanized rubber
- Anti-skid surface
- ⚠️ **WARNING:** Below



SPEED BUMP

Model # 26111

- Slows traffic to 2-5 mph
- Made from 100% recycled tires
- In-molded reflective tape and cat eye reflectors enhance visibility
- Can be installed for temporary or permanent use
- ⚠️ **WARNING:** Below



RUBBER WALL GUARD

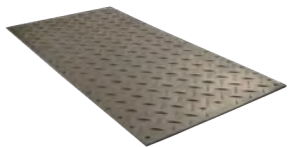
Model # CG900

- High-impact virgin rubber
- Long lasting and cost efficient
- Easily installed by one person
- Used for temporary or permanent installation
- High visibility
- ⚠️ **WARNING:** Below

⚠️ **WARNING:** This product can expose you to chemicals including Arsenic, Cobalt, Cadmium, Lead, Chromium, Nickel Compounds, which is known to the State of California to cause cancer and birth defects or other reproductive harm. For more information go to www.P65Warnings.ca.gov.

GROUND PROTECTION

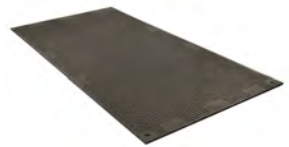
Whether you need to protect sensitive turf, or provide extra traction, Checkers™ ground protection solutions have you covered. Checkers™ mats can be connected together to form roadways or walkways, and with a wide variety of traction patterns, weights, and designs, they are applicable to nearly every industry.



ALTURNAMAT®

Model # AM48

- Bold cleat tread for great traction
- Mats can be locked together with Turn-A-Links forming a continuous roadway
- Translucent material available to allow sunlight to reach grass
- ⚠️ **WARNING:** Below



VERSAMAT®

Model # VM48

- Flat tread design is easy to walk on
- Virtually eliminates ground restoration costs from vehicle damage
- Easy to handle
- ⚠️ **WARNING:** Below



⚠️ **WARNING:** This product can expose you to chemicals including Lead, Carbon Black, Chromium, Nickel Compounds, and Sulfur Dioxide, which are known to the State of California to cause cancer and birth defects or other reproductive harm. For more information go to www.P65Warnings.ca.gov.



CHECKERS™

620 Compton St
Broomfield, CO 80020

PHONE: (800) 438-9336

FAX: (720) 890-4858

EMAIL: sales@checkers-safety.com

www.checkers-safety.com

Ver: 5/19



A PRODUCT OF:



Justrite Safety Group is the leading source of safety equipment for flammables and hazardous materials storage and handling, asset protection, environmental protection spill containment, absorbents, specialized chemical storage, cable management, safety showers, eye/face washes, matting, and vehicle safety equipment. Learn more at Justrite.com, Checkers-safety.com, and Notrax.com.